

estate agents **auctioneers**

**hollis
morgan**

21 Constitution Hill, Cliftonwood, Bristol, BS8 1DG
£465,000

Hollis Morgan - A highly individual Victorian home with fine views and enclosed rear garden

- Victorian Home
- Recently Modernised
- Two Double Bedrooms
- Spacious Kitchen
- Private Garden
- Gas Central Heating
- No Onward Chain

Description

21 Constitution Hill is a charming Victorian property set within an attractive rank of period homes located in a well regarded location. Internally the property has recently benefited from cosmetic updating throughout and now boasts fresh décor/flooring and a recently installed kitchen. The generous ground floor accommodation comprises living room, dining room and separate kitchen whilst the first floor offers two spacious light filled bedrooms and modern bathroom. Externally the property enjoys a low maintenance south west facing rear garden.

Location

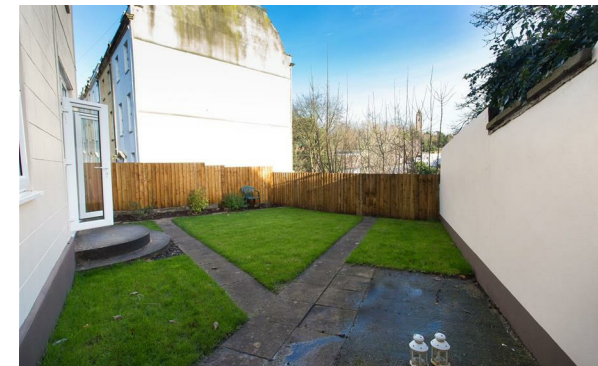
Clifton and the surrounding areas, with its Victorian and Georgian architecture, are amongst the most sought after locations in the City. The area offers charm alongside excellent amenities with independent shops, boutiques, cafes, bars and restaurants to be found on both Whiteladies Road and Clifton Village including Clifton Down shopping Centre. The Downs offers four hundred acres of green public space whilst Brunel's Clifton Suspension Bridge provides a gateway to the Ashton Court Estate with its woodlands, mountain bike trails and walks whilst there is excellent access to the exciting Harbourside district, the City Centre and Temple Meads.

Tenure

Freehold.

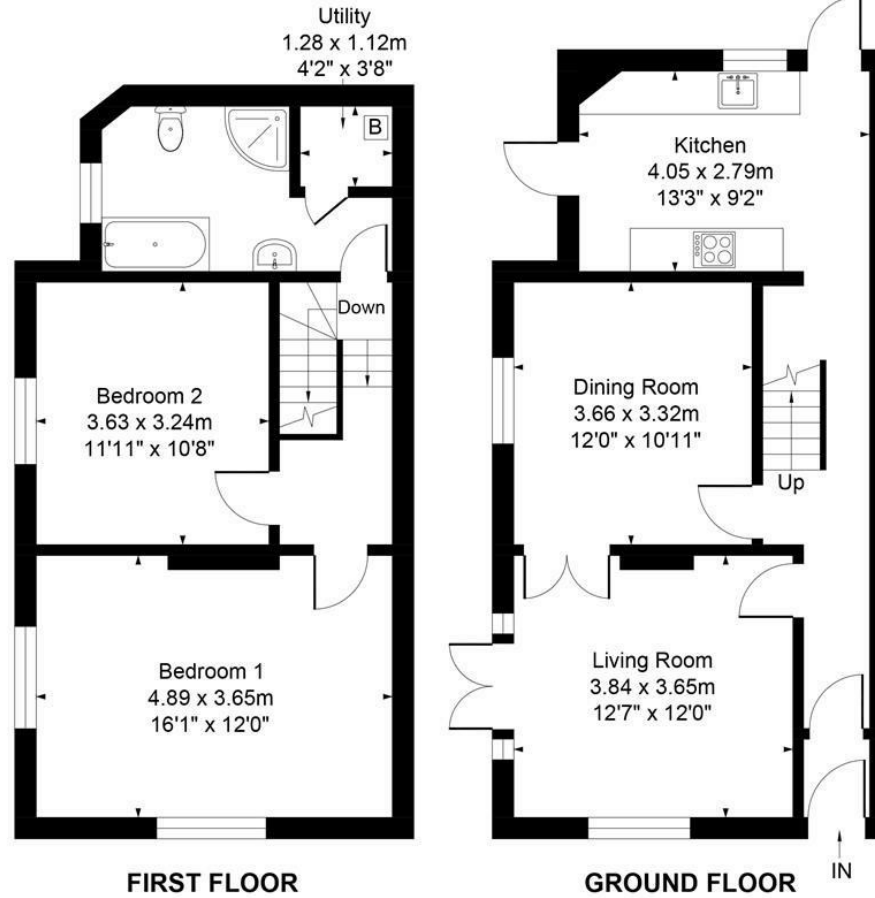
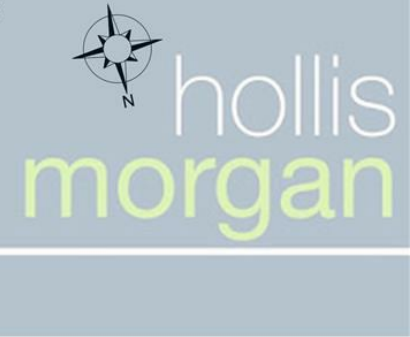
Please Note

We endeavour to make our sales details accurate and reliable but they should not be relied on as statements or representations of fact and they do not constitute any part of an offer or contract. The seller does not make any representation or give any warranty in relation to the property and we have no authority to do so on behalf of the seller.



21 Constitution Hill, Clifton, Bristol, BS8 1DG
APPROX. GROSS INTERNAL FLOOR AREA 1030 SQ FT 95.75 SQ METRES

TOTAL APPROX. 504 SQ FT 46.85 SQ METRES TOTAL APPROX. 526 SQ FT 48.90 SQ METRES

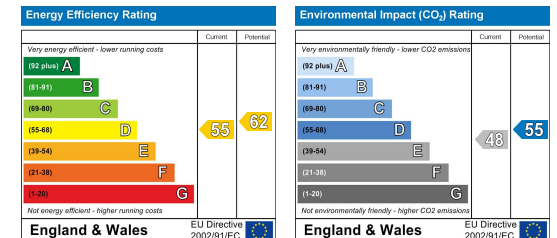


Illustrated for identification purposes only, measurements are approximate, not to scale.

e-mail: post@hollismorgan.co.uk www.hollismorgan.co.uk

9 Waterloo Street, Clifton, Bristol BS8 4BT. Telephone: 0117 973 65 65

Hollis Morgan Property Limited, registered in England, registered 7275716. Registered address, 5 Upper Belgrave Road, Clifton, Bristol BS8 2XQ



hollis
morgan
